



MMTS DERIVATIVES MARKET

Trader Workplace
software

installation guide
v1.3

Please, always check the www.bse.hu website to see whether you are using the latest version of the present document.

Author: IT Development and Operations Division
Version: 1.3
Date: Sept 12, 2017



Contents

1. INTRODUCTION	3
1.1. TARGETED USER GROUP.....	3
1.2. LEGAL ISSUES CONCERNING THE USE OF THE TRADER WORKPLACE.....	3
2. INSTALLING THE SOFTWARE.....	3
2.1. HARDWARE AND SOFTWARE REQUIREMENTS OF THE SOFTWARE INSTALLATION	3
2.2. DOWNLOADING THE SOFTWARE INSTALLATION KIT	4
2.3. PREPARATIONS	4
2.4. REQUIRED AUTHORISATION	5
2.5. OTHER REQUIRED COMPONENTS.....	5
2.6. NOTES ON REMOTE TRADER WORK AREAS.....	5
2.7. INSTALLATION STEPS.....	5
2.7.1. <i>Welcome Window</i>	5
2.7.2. <i>Choose Destination Location Window</i>	6
2.7.3. <i>Select Program Manager Group Window</i>	7
2.7.4. <i>Select Your Group Window</i>	8
2.7.5. <i>Start Installation Window</i>	8
2.7.6. <i>Installing Window</i>	9
2.7.7. <i>Installation Complete Window</i>	9
3. UNINSTALL.....	10
4. CONTACTING THE HELP DESK	11

Changes

Date	Version	Comment
03/17/2005	1.2	Windows NT is not supported anymore New authorization requirements added Required Authorisation (2.4)
09/25/2007	1.3	Option to install additional icon for warehouse receipts trading



1. Introduction

The MMTS Trader Workplace Software (hereinafter: the Software) Installation Guide summarises the steps for the Software installation and the requirements posed on the environment. This installation enables trading on Budapest Stock Exchange Ltd. (hereinafter: the BSE) markets (inasmuch as the network and communication channels are available). Please note that two separate applications should be installed for the BSE cash and derivatives markets. The current document contains the installation guide for the application enabling derivatives market trading.

1.1. Targeted User Group

This document was prepared for Remote Traders' IT professionals who are authorised to change settings and perform installations on workstations used by brokers, i.e.

- IT staff at Remote Traders
- System Administrators
- Professionals at IT companies authorised by Remote Traders to operate IT systems.

1.2. Legal Issues Concerning the Use of the Trader Workplace

The use of the Software is controlled by BSE regulations. Both the Regulations On the Operation and Use of Remote Trading and the CEO's resolution putting the Regulations into effect can be viewed at the BSE's official publication site on the Internet, www.bse.hu. The licence rights of the Software are granted to the BSE while the utilisation rights are granted to the Remote Trader free of charge by the BSE at the time of preparing this document. Other users are not permitted to use or apply the Software for any purpose.

2. Installing the Software

2.1. Hardware and Software Requirements of the Software Installation

The hardware and operating system requirements for installing and running the Software are published by the BSE in the form of a resolution from the CEO. The resolutions can be found on the BSE website. Guides for operating system installation and network settings can be found in another document. The conditions described in this document must be met in order to install the Software.

The following one operating system is supported at the time of preparing this document: Microsoft XP. The Software does not run under Linux, UNIX, Solaris, etc.

The tested environments are as follows:

- Microsoft Windows XP Hungarian, (Microsoft Office XP Hungarian)
- Microsoft Windows XP English, (Microsoft Office XP English)



If you wish to install the Software under a newer version of an operating system or with an updater service pack, please check whether it is listed among the environments tested by the BSE.

Minimum hardware requirements (at the time of preparing this document, according to CEO's Resolution No. 11/2003)

- IBM PC PIII or higher
- Min. 128 MB Ram
- 10 GB hard disk
- video card, 1024*768 resolution

2.2. Downloading the Software Installation Kit

In order to install the Software, download the Software Installation Kit, which can be accessed at two sites:

- the official BSE website, www.bse.hu, under the Members/Members Only/Downloads menu item. This page is password protected and requires a user ID which can be obtained from a BSE contact person upon agreement, after submitting the relevant and properly signed authorisation (see paragraph 3);
- as a shared file on the SMS server of the BSE MMTS network. This server can be accessed by your Trader Workplace PCs at: \\mmts_sms\download.

If you download the installation kit from the website, it is recommended that you download it on another computer and transfer the installation kit to the Trader Workplace PC on a data medium or through a network.

IMPORTANT!

If you download the kit from the MMTS SMS server, please ensure that you do not download it during a trading period in order to avoid disturbing remote traders who wish to trade at the same time. Therefore, it is recommended that the kit be downloaded before 9:00 a.m. or after 5:30 p.m.

Downloading the installation kit gives you an executable EXE file with the name of the market and the version number, (for example, TW5_2_0_242_DERIV_BSE_SETUP.exe).

2.3. Preparations

If you are installing the Software for the first time, it is **recommended** that you back-up your computer. Please close other programs that are running and save any open documents. Install the service and repair kits you are authorised to install. If an earlier version of the program is already installed, it is recommended that you uninstall it. Whenever the Software is uninstalled, work area information is also deleted.

Note. You can uninstall only those versions that have been installed by running an installation kit. These can be uninstalled using the options under menu item *Control Panel/Add or Remove Programs*. Some directories on your computer may contain earlier versions copied by the BSE. As these have been simply copied, there is no uninstall option for them in the menu and they can be removed by deleting the files. Having two different versions of the Software installed may lead to unexpected results because some DLL files are registered during the installation. If a significantly new DLL is registered – during the new version's install – the older version of the Software may not run.



2.4. Required Authorisation

In order to install the Software, you need system administration authorisation. The program stores files in its own directory, in the Windows directory, and Windows\system32 directory. It also writes data into the services file (at first installation) and into the registry.

IMPORTANT! Please give to the other XP users write/delete/modify permission to the installation directory (system drive:\Program Files\BSE\TWderiv\ <TW version no>)! Without these permissions the Software will not run.

Ex.: cacls „c:\program files\bse\twderiv\5.2.0.24_6” /e /p users:c

2.5. Other Required Components

Important!

In order to run the Software, you need the Microsoft Data Access Component (version 2.10.3711.2 or higher). This only needs to be installed when you are installing the application for the first time. The installation kit for the MDAC version required by Windows NT can also be downloaded from the website.

2.6. Notes on Remote Trader Work Areas

When using earlier versions of the Software, Remote Traders adjusted the individual settings in the Software (position of windows, colours, etc.). These are loaded by the Software at Start-up and they are saved at exit. The information are stored in the registry.

IMPORTANT!

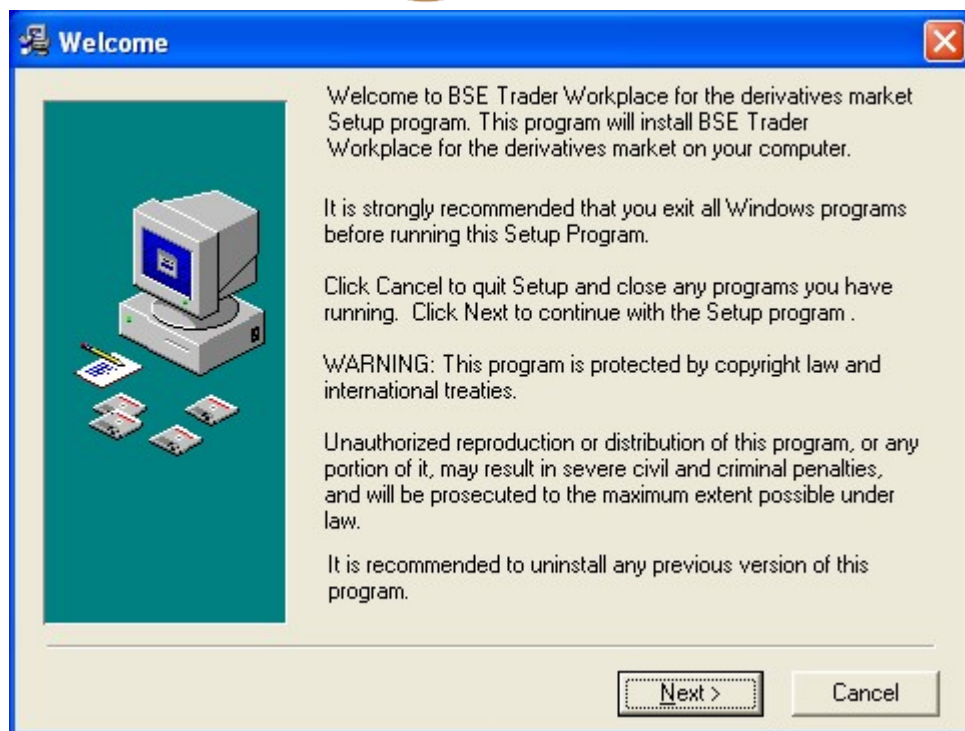
Unfortunately, when changing over to a version containing significant modifications, the structure of work area information may also change. In this case, work area information should be deleted. The BSE shall inform you if this occurs when a new version is introduced. The BSE provides a program on the website to delete earlier work area information.

When the Software is uninstalled, work area information is also deleted.

2.7. Installation Steps

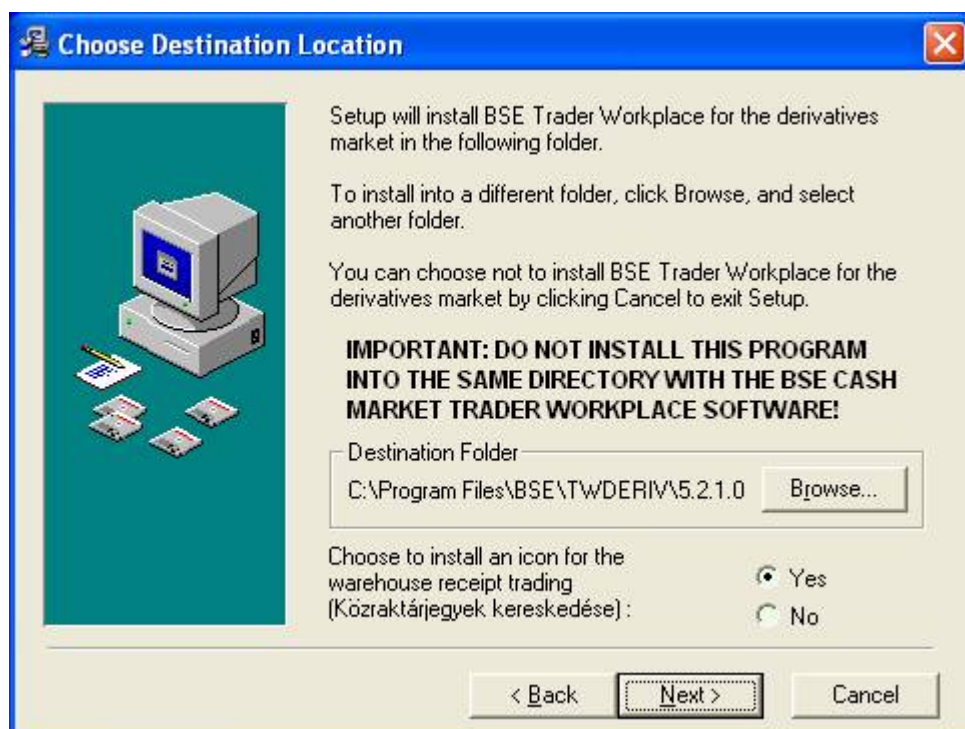
Start the installation kit downloaded according to paragraph 2.2.

2.7.1. Welcome Window



This contains a welcome message with installation information. If you wish to install the program, press the Next button.

2.7.2. Choose Destination Location Window



Select the directory (folder) where you want to install the Software. By pressing the Browse button, you can change the directory of the main files (it is advisable to use the default directory which is *system drive:\Program Files\BSE\TWDERIV\ <TW version number>*).



Important!

The installation kit finds versions which may have been installed previously. It is recommended to specify another directory name and avoid installation into an existing TW directory (if you have not uninstalled the earlier version).

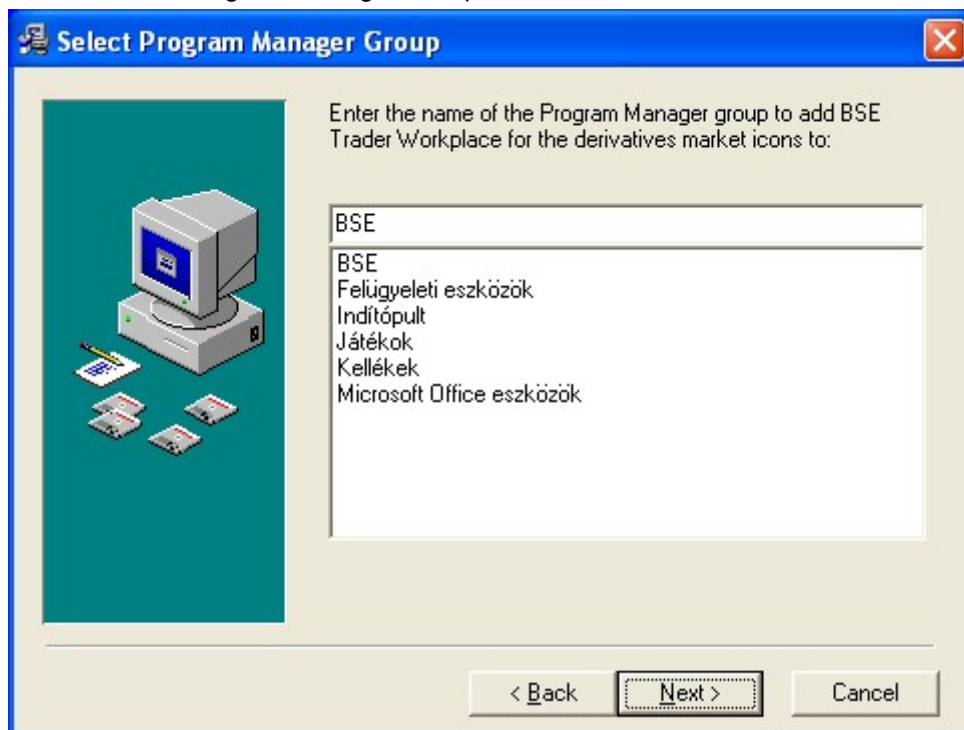
Never install derivatives market Software and cash market Software into the same directory!!!

Should you wish to trade warehouse receipts with this software too, please select “Yes” for this option. Thus an additional icon and program start menu item will be installed in order to run the Trader Workplace software connected to this (warehouse receipt trading) market .

If you select “No” for this option, the desktop icon and the program start menu item will not be created.

Once the directory location is selected, you can continue by pressing the Next button.

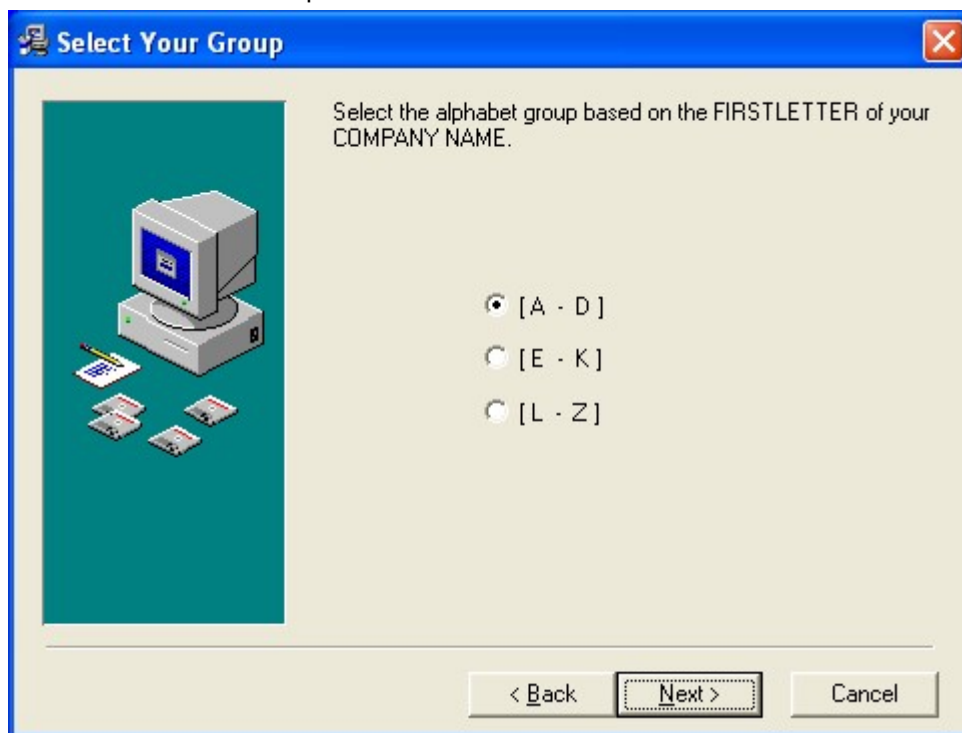
2.7.3. Select Program Manager Group Window



Here you can select the which directory group of the Start menu the program icons will be added to. The default directory is BSE. Continue by pressing the Next button.

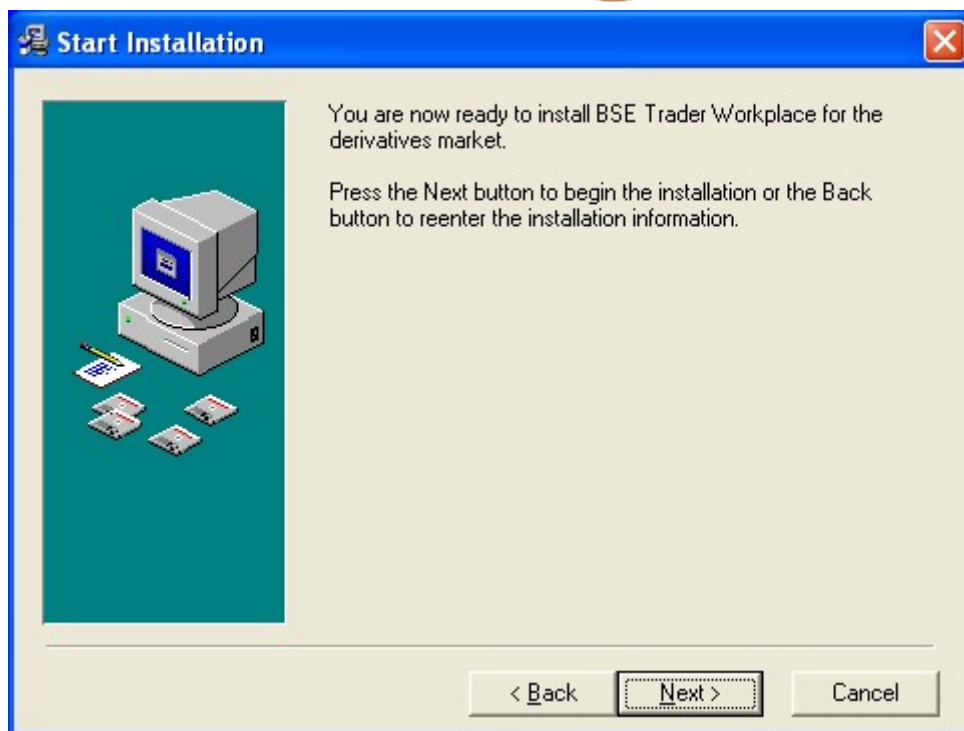


2.7.4. Select Your Group Window



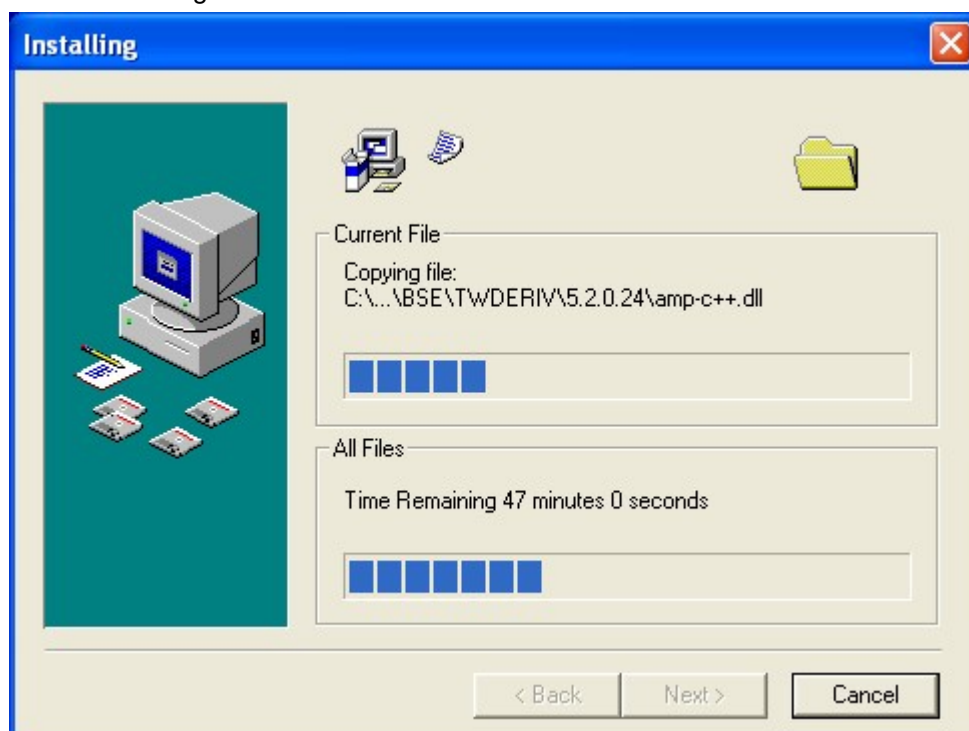
Select your group based on the first letter of your company name using the radio buttons in this window. (For example, mark the M—W group with a black dot for a company named “Stock Exchange Broker House”.) After completing the selection, press the Next button to proceed.

2.7.5. Start Installation Window



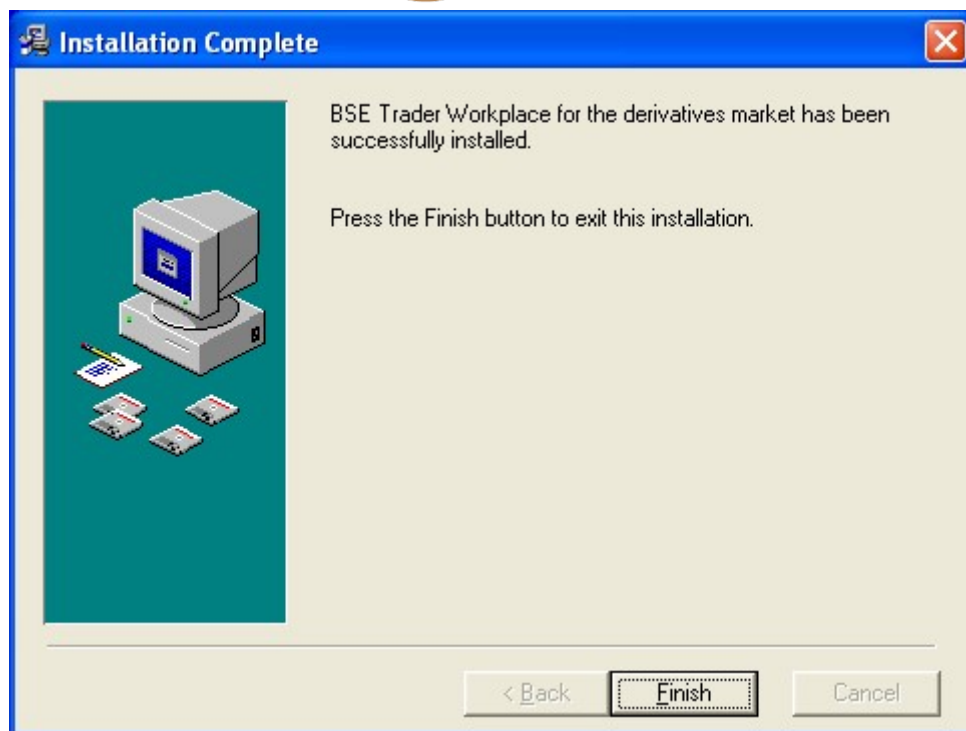
The system is prepared for installation. Installation can begin. Press the Next button to proceed.

2.7.6. Installing Window



The installation starts. The process can be monitored with the status bar.

2.7.7. Installation Complete Window



The Software has been successfully installed. Press the Finish button to exit. A new icon is displayed for starting the program in the Start menu and on the desktop, respectively. Icons pointing to Hungarian and English Help files are also displayed in the Start menu.

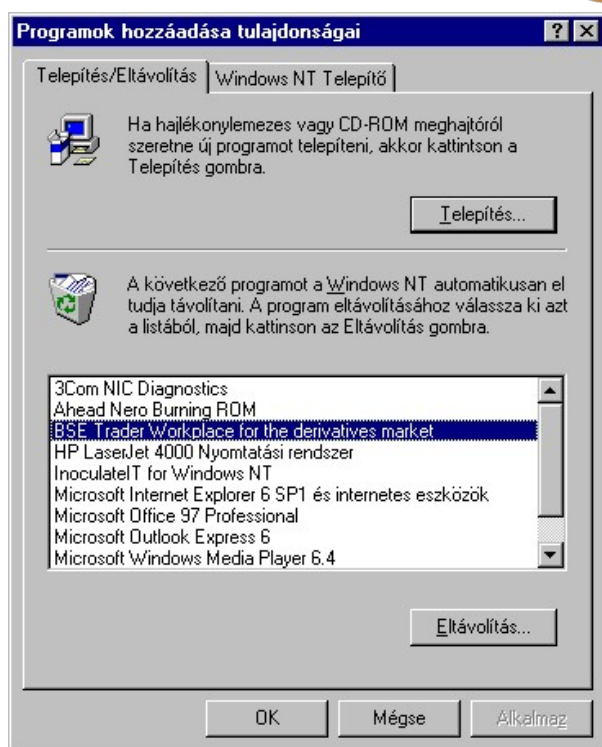


Notes:

- in order to log on to the MMTS trading system with the Software, an MMTS user ID and password are required;
- the content of the windows displayed by the Software can be exported to Excel (excel link), but only if Microsoft Excel has been installed on the PC.

3. Uninstall

If the program must be removed from the computer, remove BSE Trader Workplace for the derivatives market from the Control Panel/Add or Remove Programs menu. When the Software is uninstalled, work area information is also deleted.



4. Contacting the Help Desk

If you have any installation related problems, please contact the Help Desk.
Telephone: +36-1-429-6741, +36-1-429-6742, and +36-1-429-6743.

VERY IMPORTANT! In certain cases, the IT Help Desk can only help you solve problems if you identify yourself by phone. This is achieved by announcing the name of your company and a valid IT Help Desk password. This password can be obtained through your BSE contact person in advance. If you have not done so, please call us at +36-1-429-6721 to obtain an "IT Help Desk password".

In case of procedural or authorisation-related technical problems, please call Ms. Erika Rába, telephone: +36-1-429-6756.